

# AGRU PE-Adapters

## Product information

### Flexible and efficient

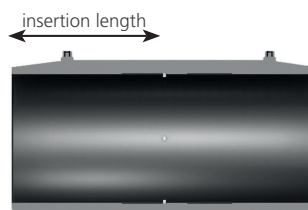
The PE-Adapters can be combined with each type of the electrofusion fitting: this increases the flexibility and reduces the stock-keeping.

### Advantages:

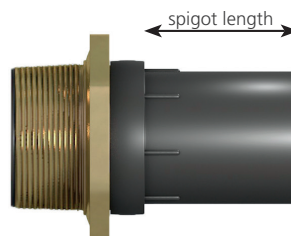
- modular system
- the part of the male adapter, which is in contact with the medium is made of 100% PE
- the brass parts fully conform to the requirements of the Drinking Water Ordinance
- using a gasket is possible, male and female threads have sufficient sealig surface
- conical male thread
- cylindrical female thread
- also usable for heated element butt- and socket welding



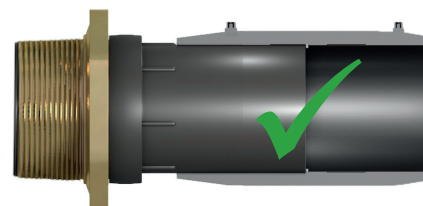
The required insertion length of the used electro-fusion fittings has to be followed acc. to DVS 2207-1.



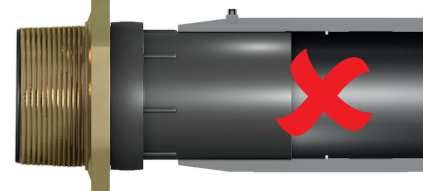
The complete spigot length incl. spacers should be used while inserting the adapter into the electro-fusion fitting.



Pic. 1: AGRU E-fitting



Pic. 2: Shorter E-fitting from other manufacturer - correct insertion



Pic. 2: Shorter E-fitting from other manufacturer - incorrect insertion

